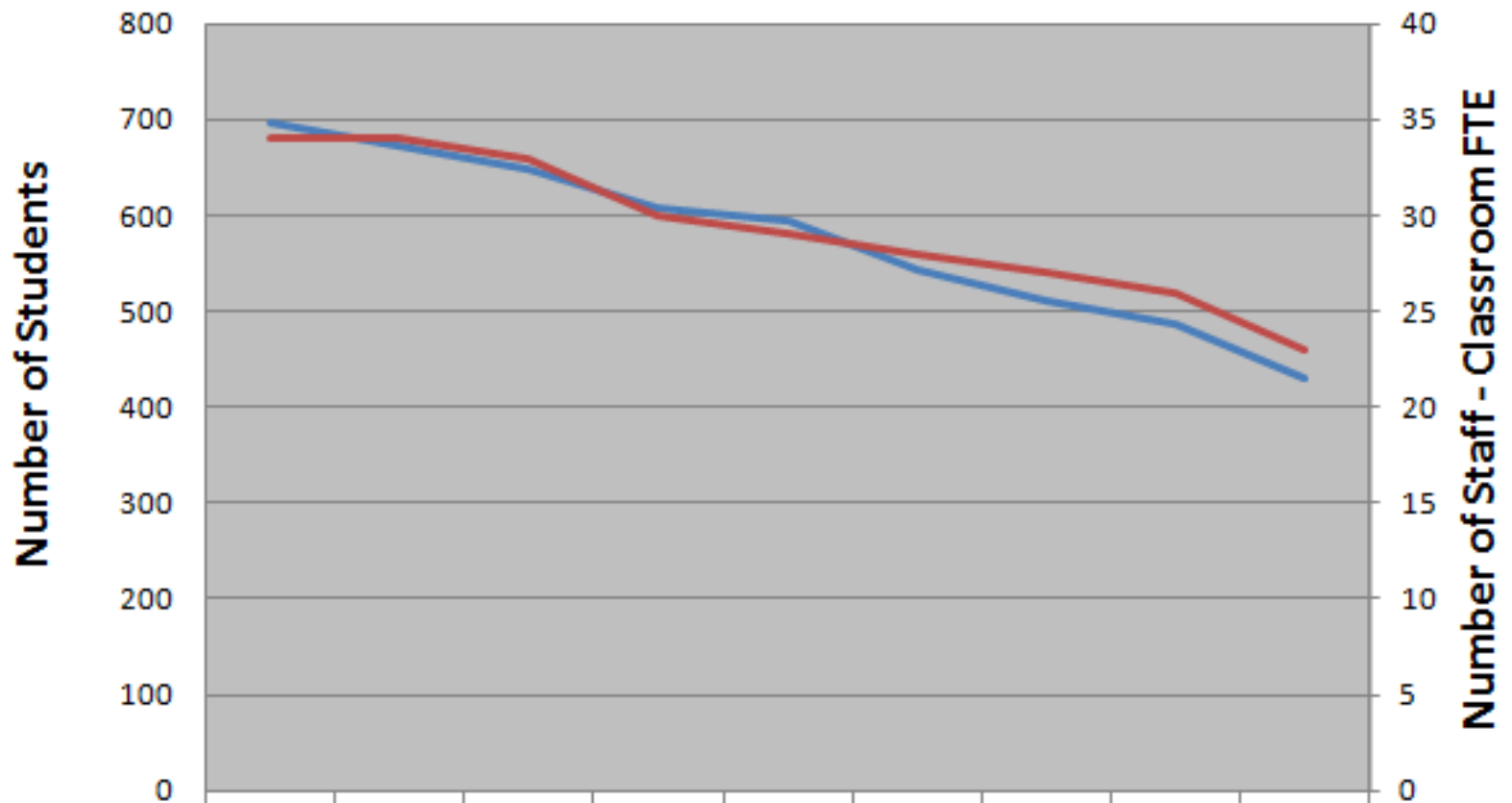
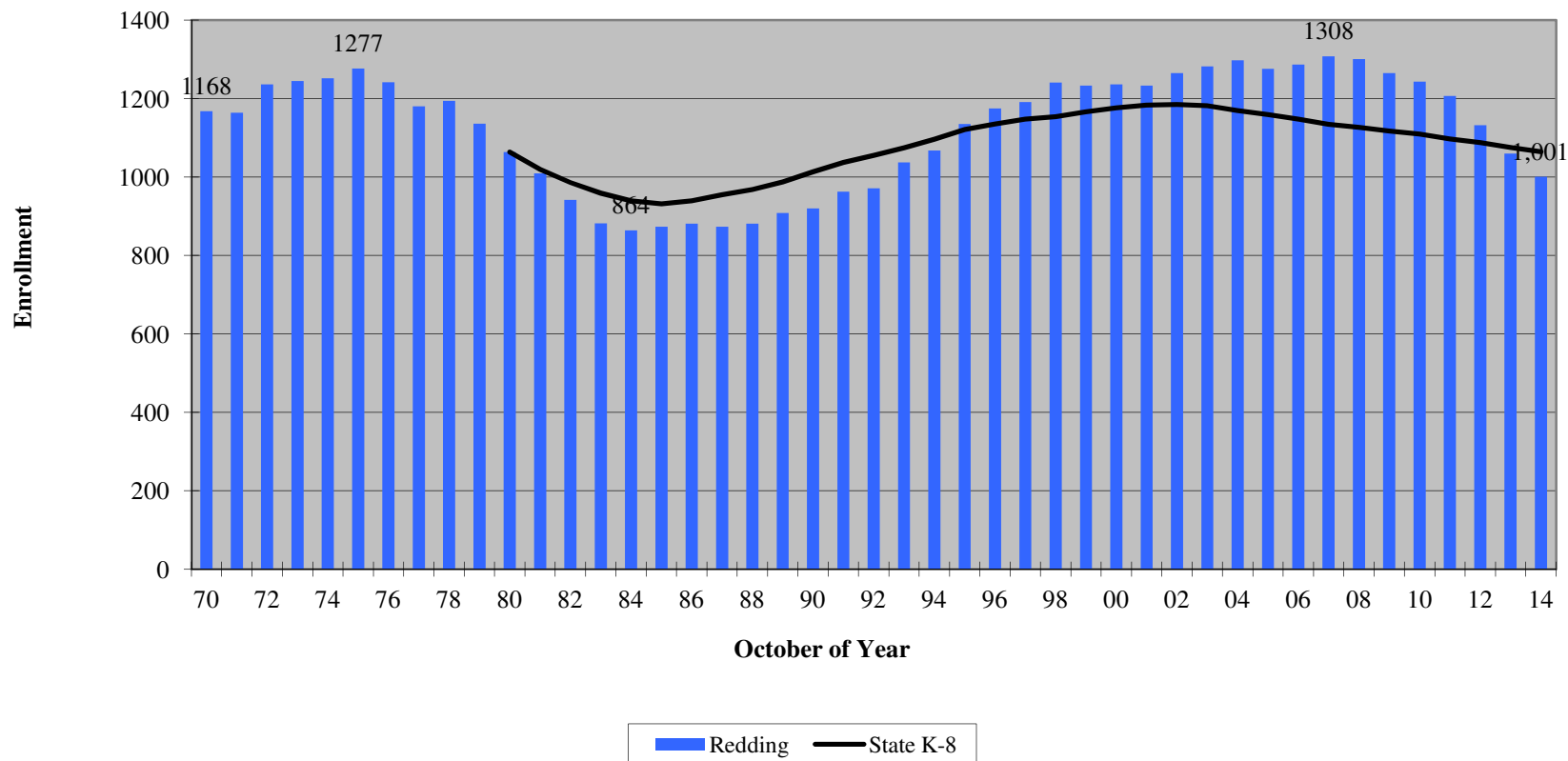


## RES Enrollment and Staffing



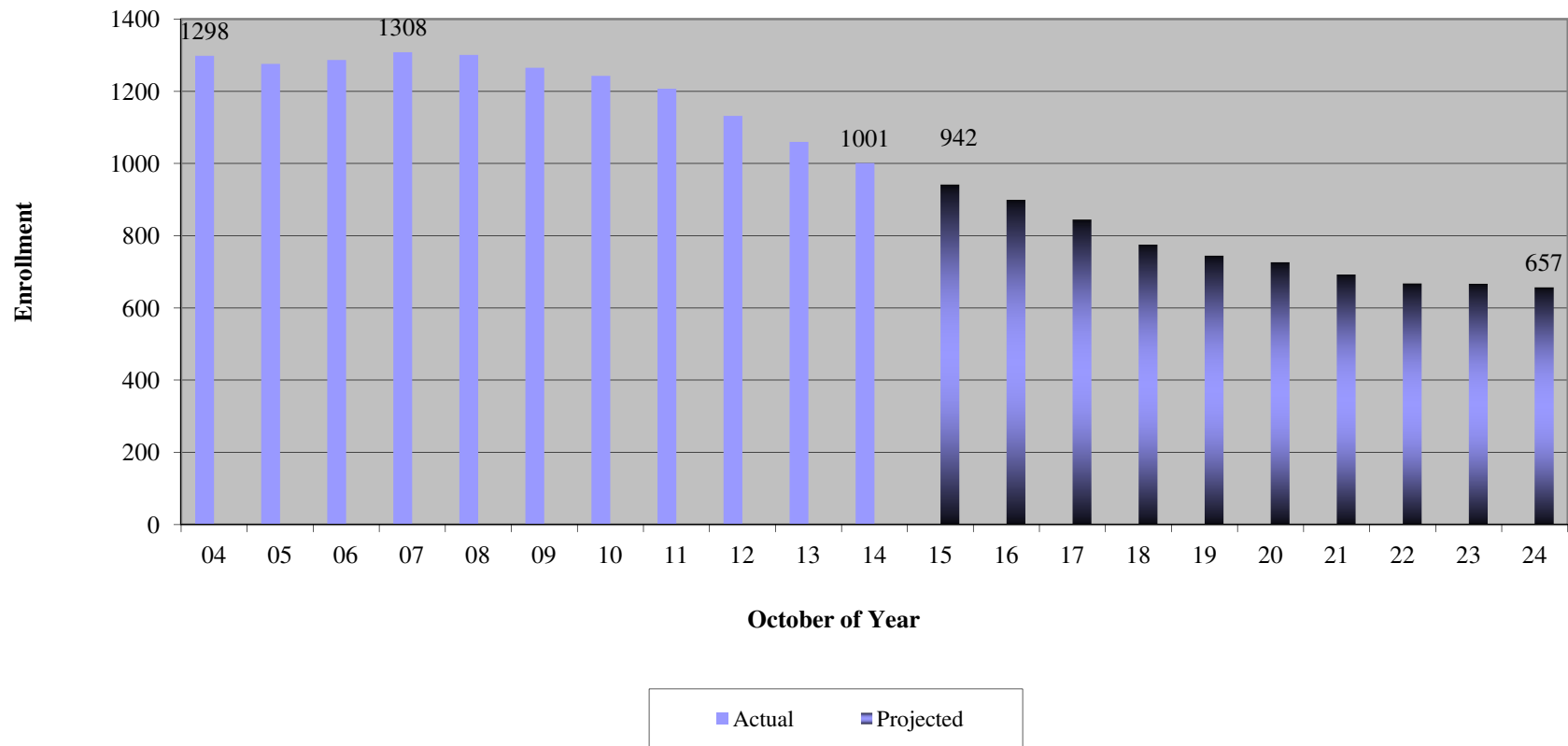
	'06-'07	'07-'08	'08-'09	'09-'10	'10-'11	'11-'12	'12-'13	'13-'14	'14-'15
K-4 Enrollment	696	672	648	608	595	544	510	488	429
Classroom FTE	34	34	33	30	29	28	27	26	23

## Redding and State K-8 Enrollment



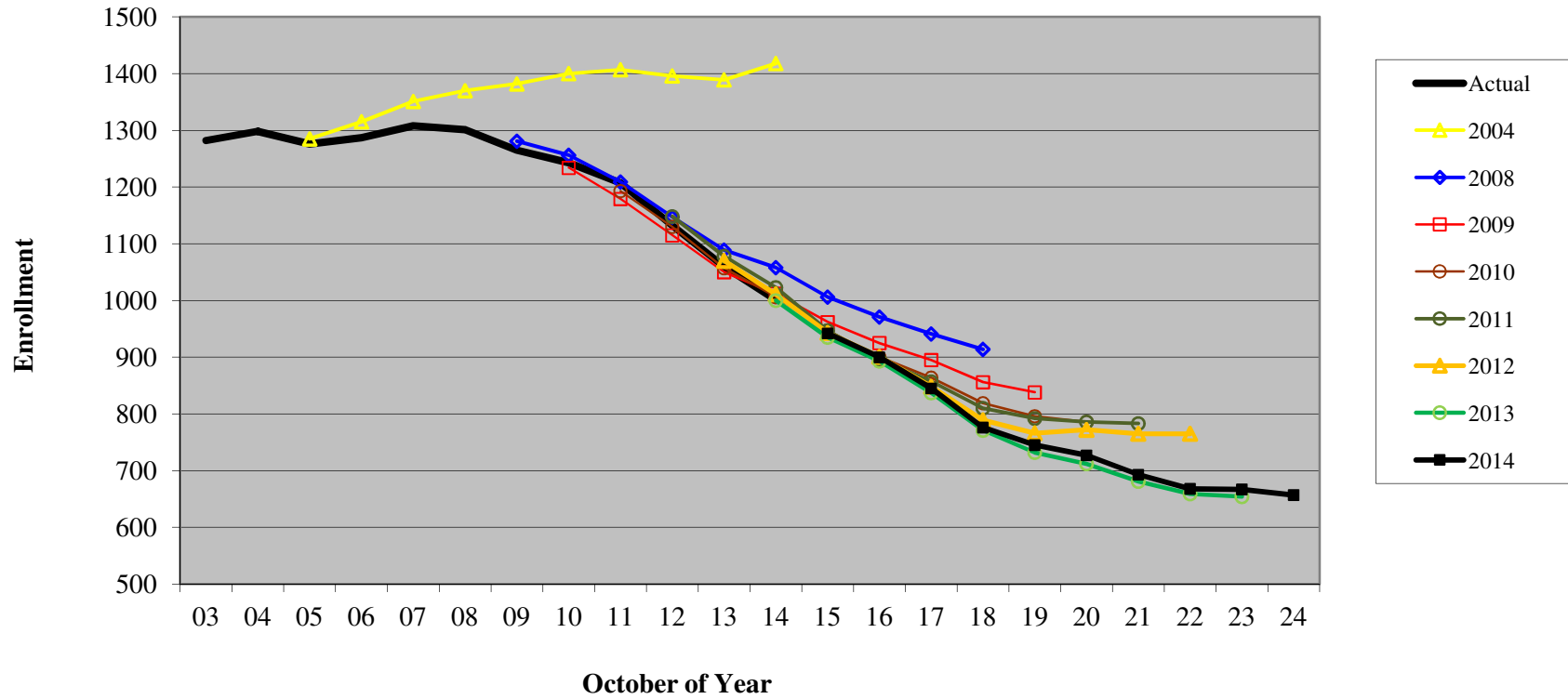
From 2014 Prowda Report – Figure #1

# Redding Enrollment Actual and Projected K-8



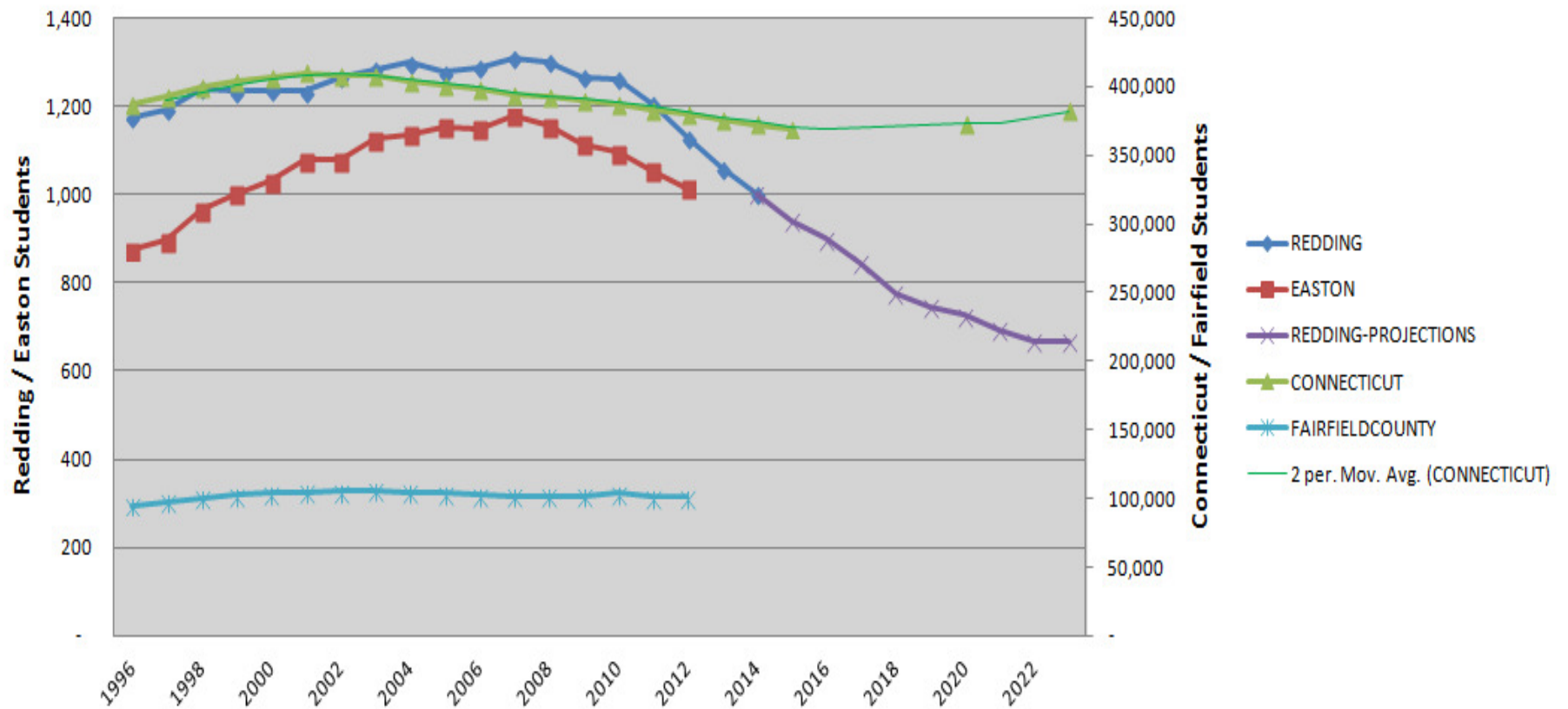
From 2014 Prowda Report – Figure #5

## Redding Enrollment Projections Current and Prior



From 2014 Prowda Report – Figure #19

## Enrollment - Pre-K through Grade 8 Number of Students



## Enrollment Pre-K through Grade 8 1996 as Base Year

